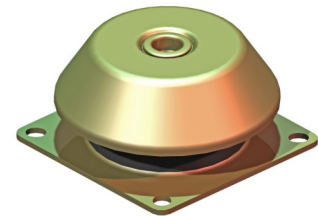




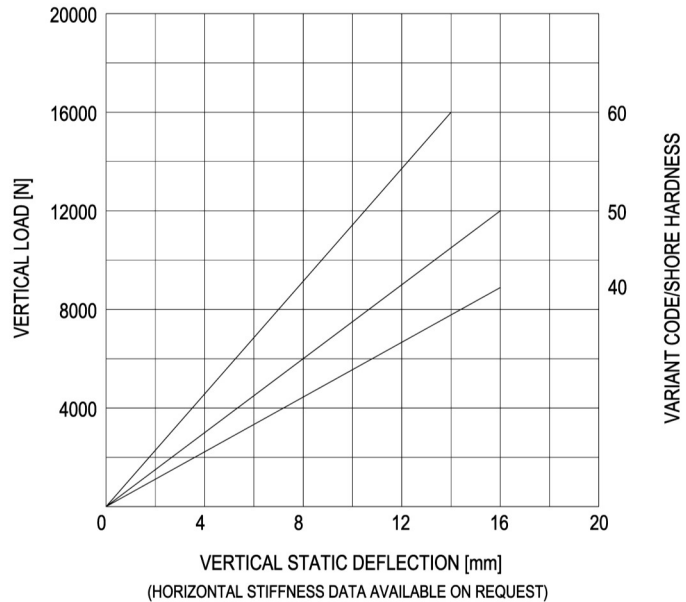
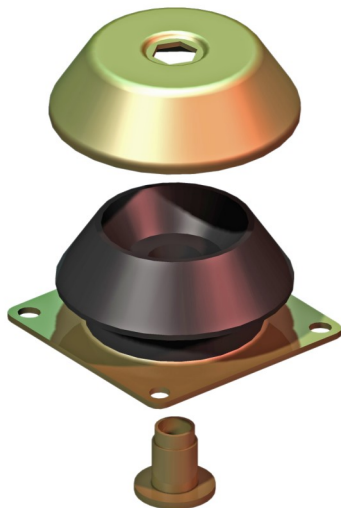
**GM-Mounting**  
**type 10-GM-1700-A**  
 Max. 1700 kg - 16 mm - 4 Hz

**GM-Mountings** are very suitable for stationary and mobile applications. These compact anti-vibration mountings are easy to install and offer a high level of vibration and acoustic insulation. The integrated rebound control-device limits excessive movement under external loads. GM-Mountings are available in several rubber mixes to accommodate a large load range. These mountings can be supplied with a height adjustment feature and are also available with M16 inner thread.

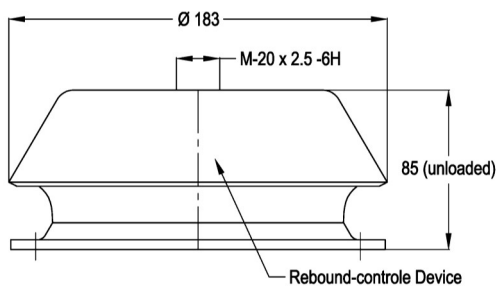


Applications: generator sets, pump units, compressor skids, etc

**LOAD CHARACTERISTICS**



**SIDE-VIEW**



**TOPVIEW**

