



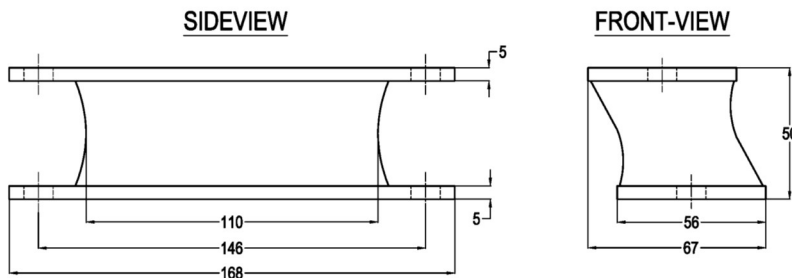
IS-Mounting
type 10-IS
Max. 1000 kg

IS-Mountings are suitable for a wide range of applications and are able to take both compression and shear loads. IS mountings are produced in a variety of rubber mixes. For the selection of these mountings we advise you to consult our engineers.

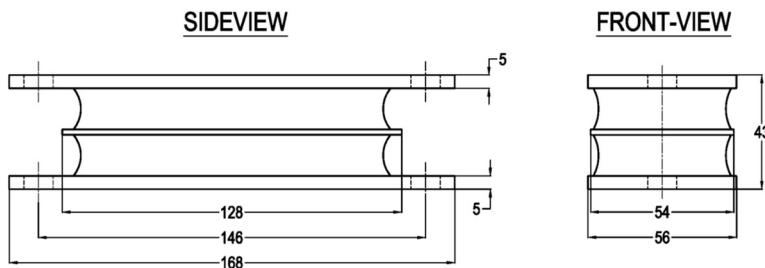
Applications: generator sets, vibrating screens, compressor skids, rail-, on- and off-road road vehicles etc.



Type 001



Type 002



Type 003

